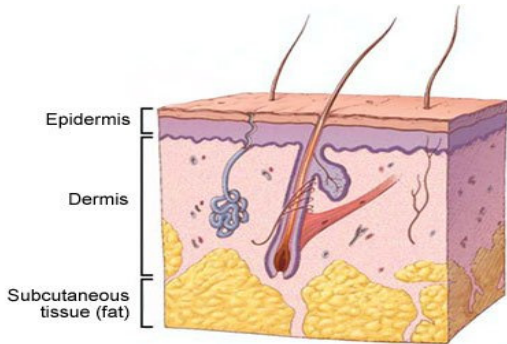


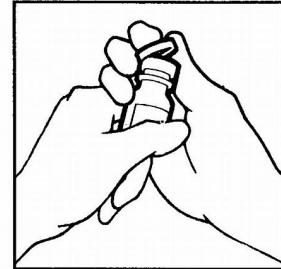
Subcutaneous Injections

Subcutaneous injection means a needle is inserted just under the skin into the subcutaneous tissue to deliver medication.



Steps:

1. Wash your hands and gather supplies.
2. Remove cap from medicine bottle and clean top of bottle with alcohol pad.



3. Remove 25 g needle and syringe from packages. Attach 25 g needle to the syringe.
4. Pull back on plunger to fill the syringe with the same amount of air as medicine to be given.
5. With medicine bottle on table, push needle through the center of the rubber stopper.
6. Slowly inject air from syringe into bottle.

Your doctor has ordered the following:

Medication: _____

Frequency: _____

Your first dose to be given on _____

@ _____ am/pm

Supplies Needed:

- Alcohol Pads
- Sharps Container
- 1 mL Luer-Lok Syringe (no needle)
- 25 g needle
- 30 g needle
- Medication: _____
 - Single Use Bottle
 - Multi Use Bottle



7. Turn bottle upside down, with needle still in bottle. Pull back on plunger to fill syringe with correct dose of medicine.



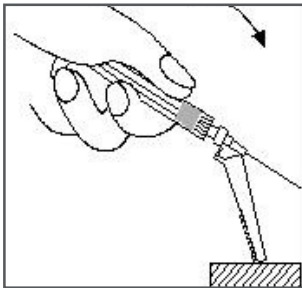
If you have any questions or concerns, please call Cook Children's Home Health at (800) 747-8242.
A nurse is available 24 hours a day.

Subcutaneous Injections

- Keep bottle upside down with needle still in medication bottle and gently tap syringe to move air bubbles to top of syringe. Once air bubbles are at top of syringe, gently push plunger to remove air bubbles then pull needle out of bottle.

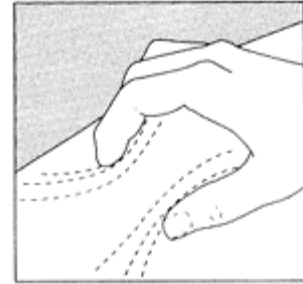


- Check dose of medicine in syringe to be sure it is correct dose.
- Pull back on plunger to pull all medicine out of needle and engage safety device of needle.



- Remove 25 g needle from syringe and attach 30 g needle to syringe.
- Gently push plunger to remove any air out of syringe and recheck dose of medicine.
- Select an injection site and clean area with alcohol. Allow alcohol to dry completely. DO NOT blow or wave to dry it.

- Pinch about one inch of skin between your thumb and forefinger.



- Hold syringe and insert needle at 45° angle.
- Release skin and slowly inject medicine then count to 10 and remove needle.
- Engage safety device on needle and throw syringe and needle in sharps container.

REMEMBER:

- Avoid belly button and waist
- Do not give injection within 1 inch of belly button.
- Select a different site each time you inject to help avoid soreness in one area.

If you have any questions or concerns, please call Cook Children's Home Health at (800) 747-8242.
A nurse is available 24 hours a day.