

TELEMETRY BAGS



Telemetry bags (sometimes referred to as “Tele bags”) are used to hold the heart and seizure monitors of active children and teens so they can move about and play without the worry of the monitor detaching. The Tele bags are used with ages 4 to 18 years.

Although this is not listed in the pattern, please be aware:

Tele Bags need to have either a D loop closure or 2 straps so that they can be tied together (where the straps meet at the shoulder allowing for adjustment depending on the child's/teen's height.) This information is not noted in the pattern.

A special thank you to Sonia Barton with Modest Eve at www.modesteve.com for allowing us the use of this pattern!

Modest Eve

PDF Sewing Patterns

PATTERN: #526
FLAT SCOOP
SIZE: 5.75" X 7.5"
53" STRAP



Cook Children's Medical Center
801 7th Ave
Fort Worth TX 76104
682-885-4590
Has Permission to Print/email and
Distribute this pattern to
Volunteers of their
Stitch-A-Wish program for
Donation purposes. If you wish
to purchase a personal use
pattern please use the contact
information below:

**PATTERNS FOR BEGINNERS - WITH INSTRUCTIONS AND
ILLUSTRATIONS EVEN THE EXPERTS CAN APPRECIATE.**

© 2012 Modest Eve
Sonia Barton
www.modesteve.com
sonia@modesteve.com
760.485.5154

FLAT SCOOP BAG #526

ITEMS YOU WILL NEED:

- 1 1/2 yard of 54" wide fabric
- 2 1/2 yard of 54" wide lining
- 3 included pattern pieces printed and taped together.

RECOMMENED TOOLS TO HAVE ON HAND:

- 1 Sewing machine
- 2 Tape
- 3 Scissors
- 4 Straight Pins
- 5 Thread to match fabric

ITEM 1, FABRIC:

You will want to use a sturdy Woven fabric like Cotton, Linen, Denim, or other like material. If you use a light weight cotton you will want to use some kind of stabalizer.

ITEM 2, LINING:

You can use any woven fabric. If you choose a nice fabric your bag will be reversible.

ITEM 4, PAPER PATTERN:

You will need to print the pattern and put it together. Please refer to our Read Me First document you should have received with this pattern. If you didn't receive a Read Me First you can visit our website www.modesteve.com and click on PDF Patterns and find the printing guidelines.

LEGEND:



Wrong side of Fabric



Right side of Outer Fabric



Right side of Lining Fabric



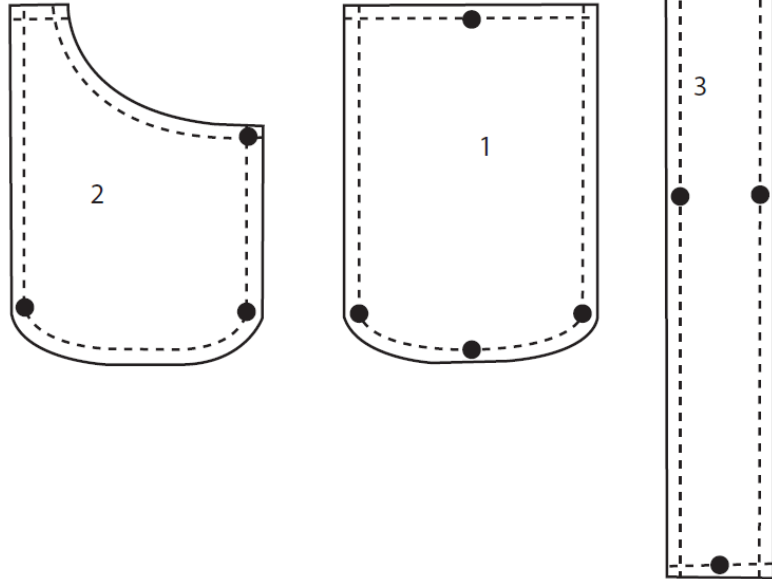
Cutting line of Pattern



Sewing line of Pattern

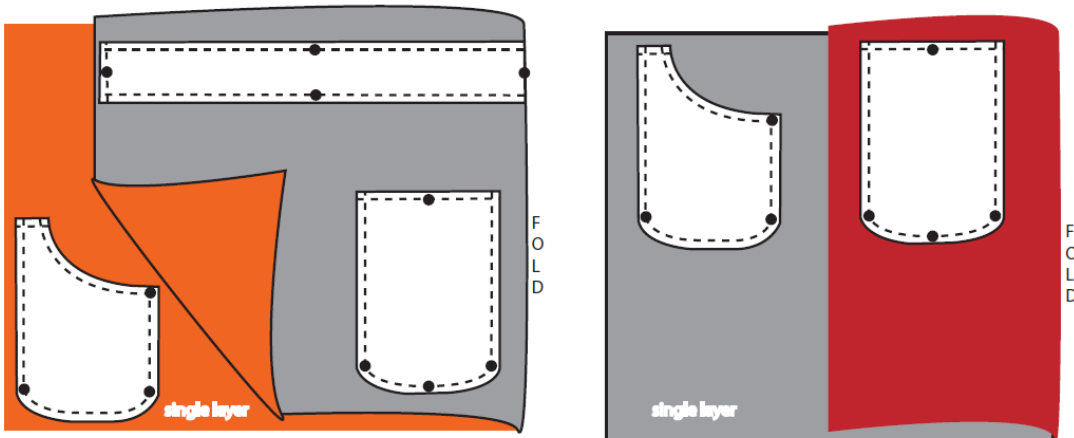
PATTERN PIECES

- 1 Shape 1 = Body
- 2 Shape 2 = Scoop Pocket
- 3 Shape 3 = Strap



CUTTING THE FABRIC

- 1 Body - Cut 2 Outer Fabric, Cut 2 Lining Fabric
- 2 Scoop Pocket - Cut 1 Right side up Outer Fabric
Cut 1 wrong side up Lining Fabric
- 3 Strap - Cut 1 on Fold Outer Fabric



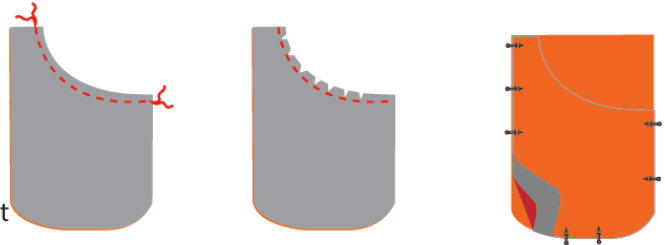
SEW STRAP

- 1 Fold Strap in half lengthwise. Stitch side seam.
- 2 Turn right side out.
- 3 Iron



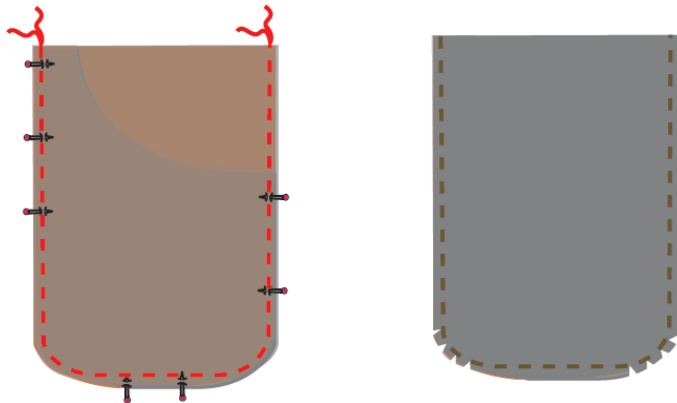
PREP OUTER POCKET

- 1 With right sides together sew the curve seam of the scoop pocket.
- 2 Clip curves.
- 3 Turn right side out.
- 4 Iron curve
- 5 Pin to the front outer body piece, and treat as one piece from this point forward.



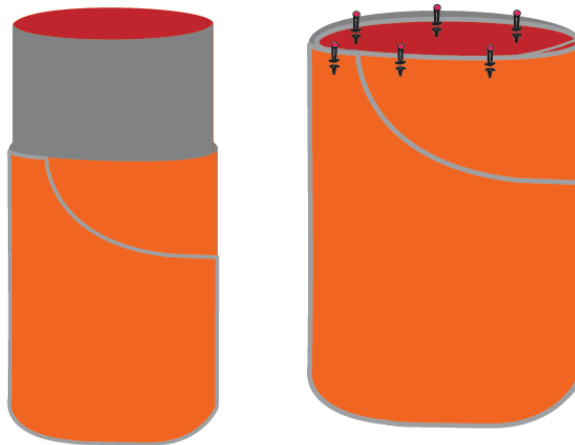
SEW BODY OUTER BODY & LINING

- 1 Place front and back outer body pieces right sides together.
- 2 Sew down one side, across the bottom following the corner curves and up the other side.
- 3 Clip curves.
- 4 Iron seams open, and turn right side out.
- 5 Repeat with 1 to 4 with lining body pieces, but don't turn right side out.



BRING THE PIECES TOGETHER

- 1 Place lining bag inside outer bag with wrong sides together.
- 2 Fold down seam allowances on outer bag and lining bag pin together.

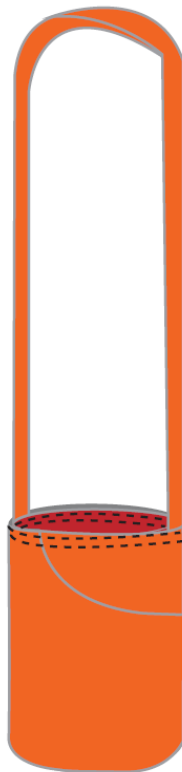


- 3 Lay the strap down in upside down U placing the strap ends near the bag ends.
- 4 Slide strap ends in between outer bag and lining.
- 5 You can either center them on the seam.
- 6 Or put one strap to the front and one strap to the back.
- 7 Stitch two rows of top stitching all the way around the top of the bag.

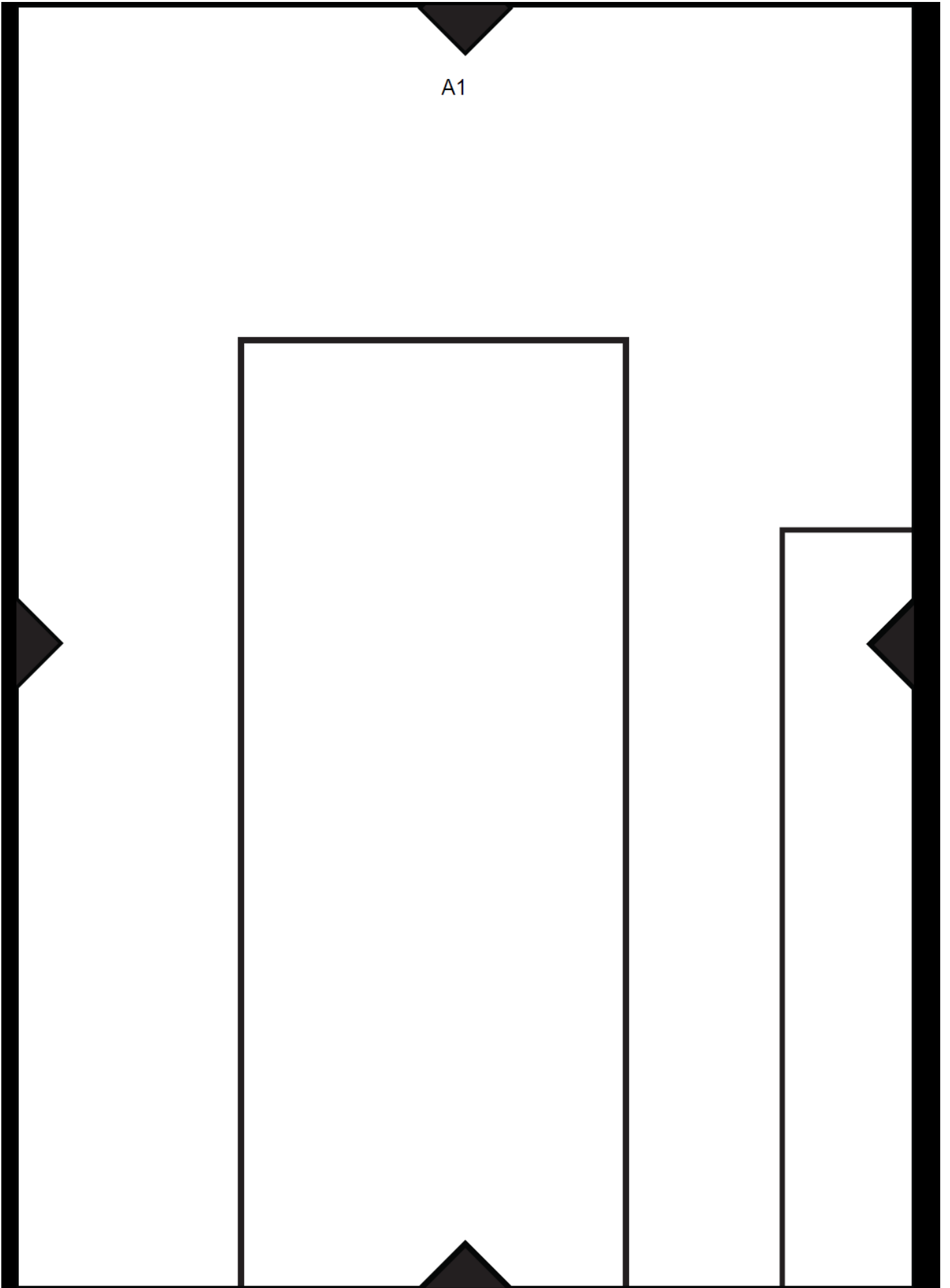
Placing the straps towards the front and towards the back reduces the bult at the sides.



FINISHED BAG



A1



A2

Modest Eve
PDF Sewing Patterns
Flat Scoop
#526
Pattern Piece #1
Body Piece
1/2 inch Seam Allowance

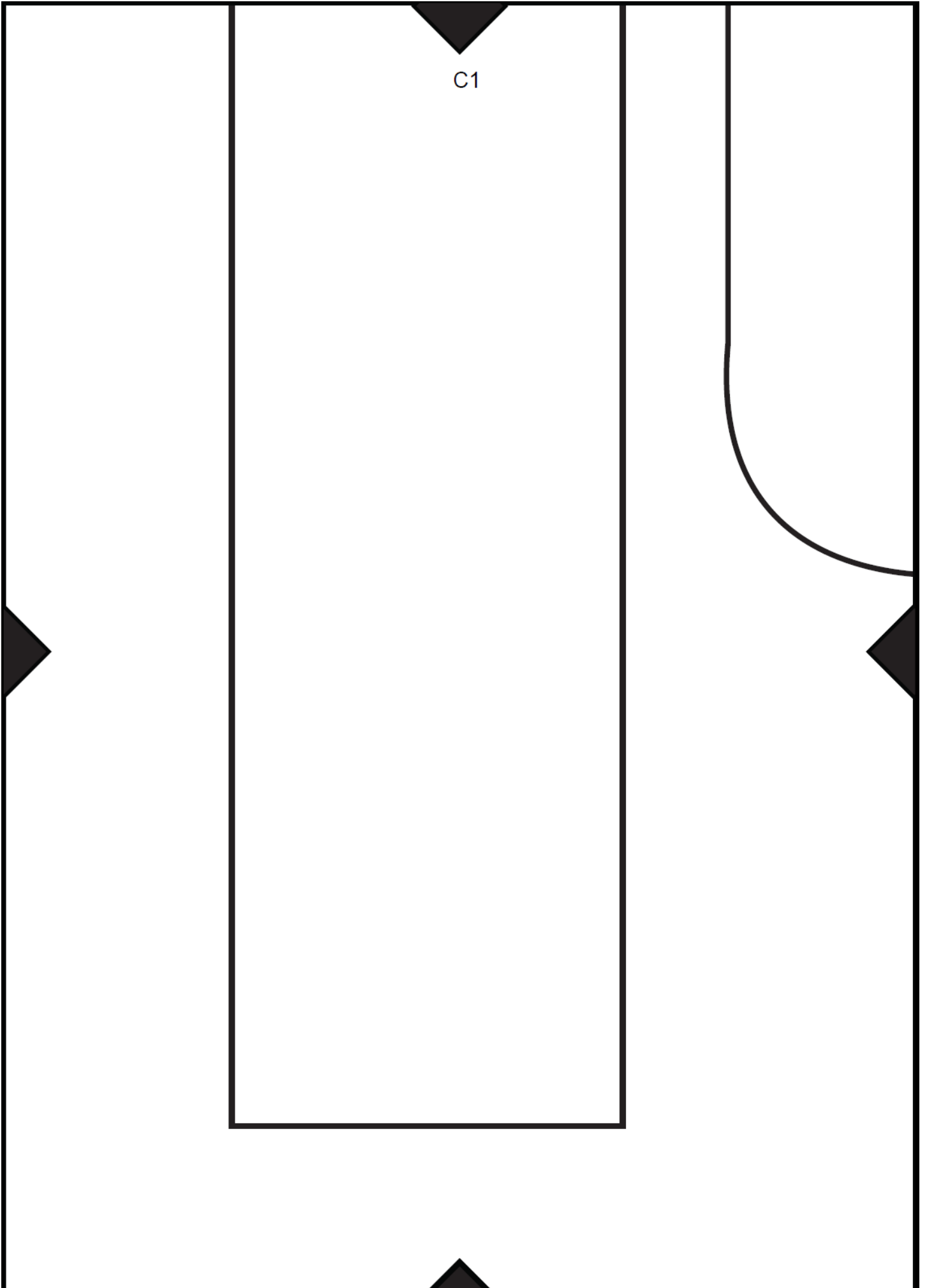


B1

Modest Eve
PDF Sewing Patterns
Flat Scoop
#526
Pattern Piece #3
Strap
1/2 inch Seam Allowance

B2





C1



C2

Modest Eve
PDF Sewing Patterns
Flat Scoop
#526
Pattern Piece #2
Scoop Pocket
1/2 inch Seam Allowance